

Door Trim and Auxiliary

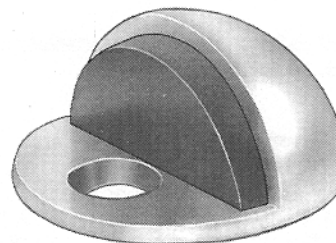


Dome Stop - Low
Meets ANSI A156.16 for L02141

241F

1 3/4" (45 mm) Diameter
1/8" (3.2 mm) thick Base

Material: Die Cast Brass
Finishes: US3, US4, US10, US10B, US15A, US19, US26, and US26D only.
Options: May be ordered with machine screws and Tampin shield.



Fasteners	Quantity	
	Box	Case
#10 x 1-1/4 screws, Tampin shield	10 each	100 each

BL241F

Same as 241F except:

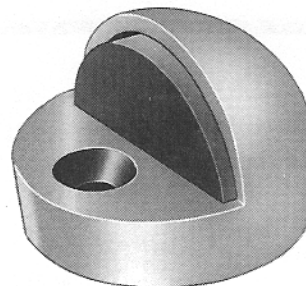
Fasteners	Quantity	
	Box	Case
#10 x 1-1/4 screws, Tampin shield	—	50 each

Dome Stop - High
Meets ANSI A156.16 for L02161

243F

1 3/4" (45 mm) Diameter
3/8" (12.5 mm) thick Base

Material: Die Cast Brass
Finishes: US3, US4, US10, US10B, US15A, US19, US26, and US26D only.
Options: May be ordered with machine screws and Tampin shield.



Fasteners	Quantity	
	Box	Case
#10 x 1-1/2 screws, shield	10 each	100 each

BL243F

Same as 243F except:

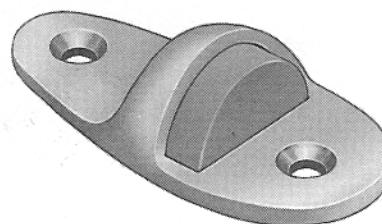
Fasteners	Quantity	
	Box	Case
#10 x 1-1/2 screws, shield	—	50 each

Cast Floor Stop

244F

1 11/16" x 4" (43 mm x 102 mm) Base
3/16" (4.8 mm) thick Base
1" (25 mm) Overall Height

Material: Cast Brass
Finishes: US3, US10, US10B, US26, and US26D only.



Fasteners	Quantity	
	Box	Case
machine screws, lead anchors	5 each	50 each

F14

PH. 1-800-325-9995 or 1-314-772-4400 • Fax 1-800-782-0149 or 1-314-772-0744

rev. 7/02

"THE FIRST FAMILY OF SUPERIOR HARDWARE"