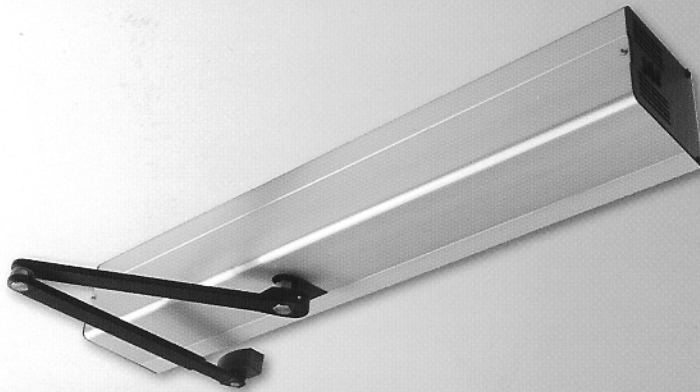


Modern Door Automation: Plain and Reliable.

Swing Door Drive TTX II Low Energy Swing Door Operator



Ideal For:

- Retail Stores
- Office Buildings
- Institutions
- Churches
- Health Care Facilities
- Restored Sites
- Government Buildings
- Universities/Schools
- Independent Living Centers
- Retirement Homes
- Facilities for the disabled
- Rest Rooms
- Residential
- ADA Approved

★★★★★
TORMAX
AUTOMATIC

SWINGDOOR

TORMAX TTX II Low Energy Swing Door Operator is a low cost, easily adjustable automatic door system. It delivers exceptional long lasting performance, and meets ANSI standard A156.19 that specifies opening and closing speeds as well as force requirements. Using reliable rack and pinion mechanics and state-of-the-art digital programmable microprocessor, the TTX II is the best solution on the market for conformance with ADA (Americans with Disabilities Act) requirements. The UL and ULC listed operator comes fully assembled and shipped as a complete unit and is available in all finishes and colors in a highly stylized enclosure.

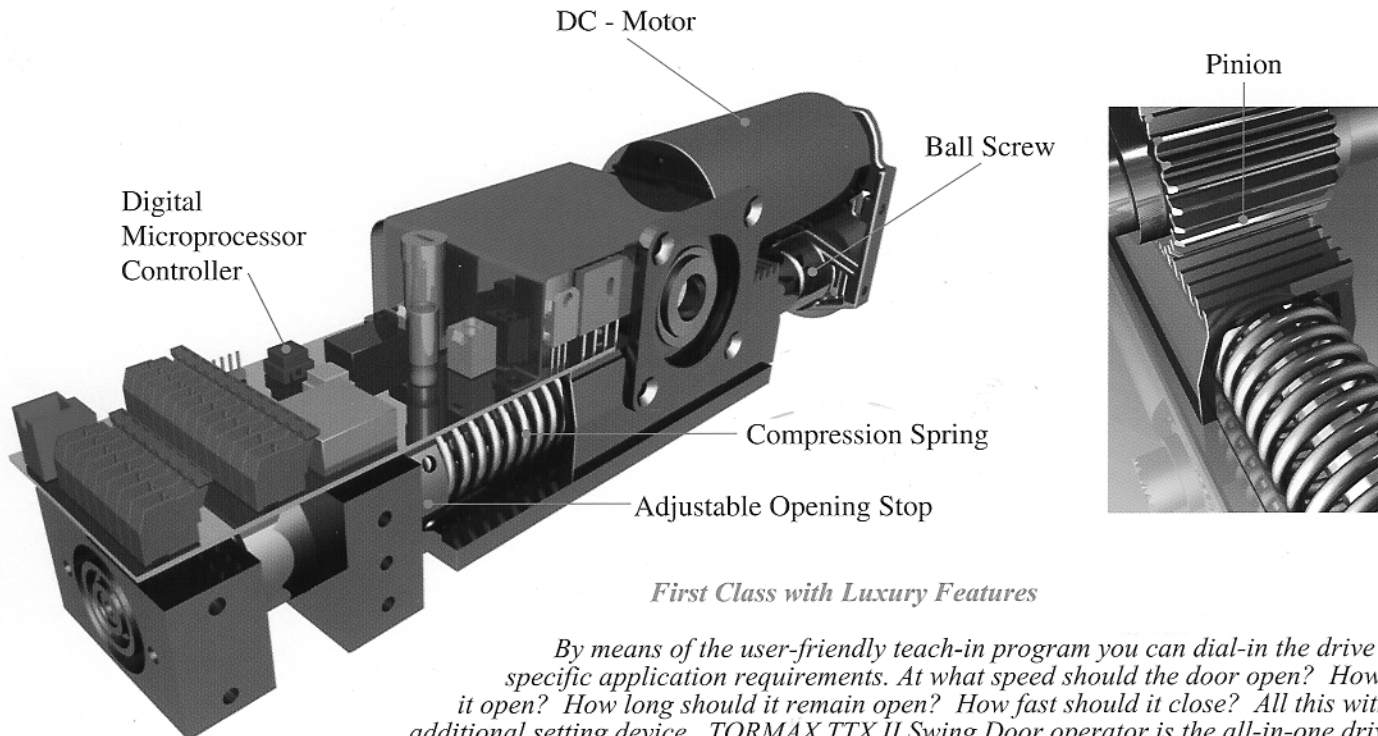
The TTX II is both an automatic and manual swing door operating system. It is adaptable to virtually any existing swing door and thereby provides barrier free access to assist the physically challenged. The power open and spring close operator is applicable to interior and exterior doors up to 48" in width and weighing up to 220 pounds.

The TTX II electro-mechanical drive system eliminates costly maintenance features associated with messy fluids from hydraulic units, and hidden costs of pneumatic units such as the need for remote air compressors and pneumatic tubing.

The TTX has several outstanding features. It is a non-handed operator which results in application flexibility. It is a surface mounted side load operator which makes for easy access to the operator. This provides for ease of maintenance and adjustment as well as a quick and easy installation. Silent operation is achieved through the use of rubber vibration isolation pads.



The Operator System



First Class with Luxury Features

By means of the user-friendly teach-in program you can dial-in the drive to meet your specific application requirements. At what speed should the door open? How wide should it open? How long should it remain open? How fast should it close? All this without a single additional setting device. TORMAX TTX II Swing Door operator is the all-in-one drive of prime TORMAX quality with its unmatched features.

Mechanical Operator Feature Benefit



The door cannot be free-wheeled in windy conditions because the operator employs a unique rack and pinion compression spring design. Also, a unique conical/hexagonal shaped output shaft design eliminates arm slippage and minimizes costly repairs commonly found on competitive operators. Design control feature will accommodate 24 VDC radio control receivers, push plates, operate and safety sensors, as well as 24 VDC electric strikes and magnetic locks.

TORMAX Technologies offers a comprehensive line of automatic door systems including slide door systems, swing door systems and industrial door systems. TORMAX products are available throughout North America through authorized TORMAX Technologies distributors.

For buildings that meet the Historic Preservation Society guidelines, specify the Tormax TN concealed in-floor low energy swing door operator.

To find out more about the TTX II low energy swing door operator, other TORMAX products, or the MAX national and regional account program, please contact us for immediate attention.



For added convenience and accessibility the door operator can be activated by a push button switch, a manual push or pull of the door "Push and Go", a remote control or simply use it as a manual door. This creates a barrier free access to assist the physically challenged.

Manual Controls

- Push Plate
- Push Pads
- Push Buttons

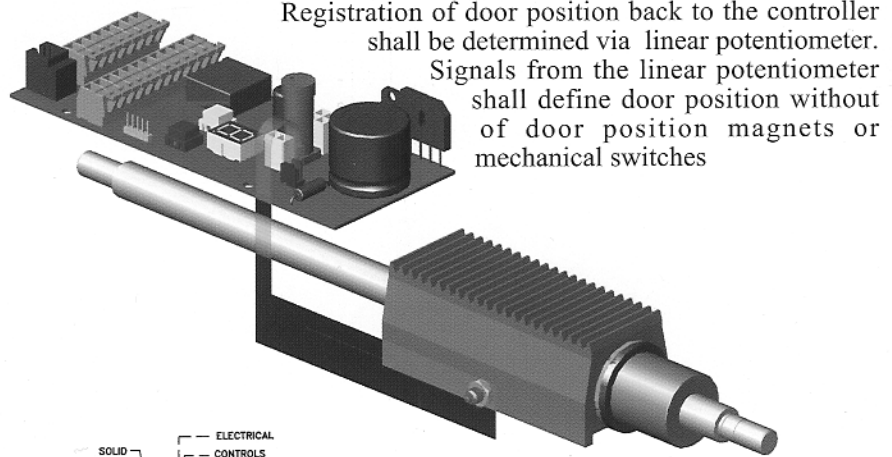
Wireless Manual Controls

- Push Plate
- Push Buttons
- Hand Held Transmitters

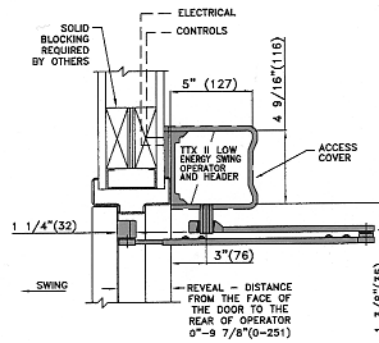
- Non-Handed Electro-Mechanical Operator Reduces on Hand Inventory
- Power Open Spring Close – Functions as a Manual Door Closer With Loss of Power
- Rack and Pinion With Compression Spring Design Eliminates Free-Wheeling of the Operator in Windy Environments
- Unique Re-Circulating Ball Screw Drive – Provides the Ultimate in Automatic and Manual Door Control (*no gears to wear or leaking oil*)
- Fractional DC Motor With Built-In Motor Protection Circuit – Interrupts Current to Motor if Door is Blocked
- Rubber Pads Isolate the Operator Mechanism From the Aluminum Back Plate-Provides for Smooth and Silent Operation (*less than 70 DB*)
- Unique Conical/Hexagonal Shaped Stainless Steel Output Shaft – Eliminates Door Arm Slippage
- Rated for Interior and Exterior Doors up to 48" Wide x 220 Lbs.
- Factory Assembled, Tested and Shipped as a Complete Unit
- Models Available to Automate Single, Simultaneous Pair and Double Egress Applications
- Lintel Mounted Backplate Design – Factory Prepared for Fast Easy Installation
- Side Load Design – For Easy Access
- Durable Steel End Plates – For Structural Integrity
- Compact Visible Design – Header Profile 4 9/16" H x 5" W x 31 1/2" L
- Built-In Adjustable Operator End Stop – No External Door Stop Required
- Three Operating Modes (*On/Off/Hold Open*) Pre-wired and Factory Installed Switch as Standard With Each Unit
- No Mechanical Switches and/or Magnets Required for Door Position – Eliminates Costly Services and Down Time

Digital Microprocessor Controller Feature Benefit

- Microprocessor Controller With On-Board Digital Programming
- Electronic Reversing for Door Obstruction in the Opening Direction and Closing Direction
- Selectable (on/off) "Push and Go" Operation
- Primary "Teach-In" Self-Learning Program for "Push and Go" and Automatic Door Operation. Establish Door Opening and Closing Speeds, Opening Angle and Hold Open Time by Manually Opening and Closing the Door
- Establish Separate and Unique Door Operating Parameters for "Push and Go" and Automatic Door Operation Through a Secondary "Teach-In" Self-Learning Program.
- Fine-Tune Door Motion Elements (*door speeds, opening angle and hold open time 0-6000s*) Independently After "Teach-In".
- Adjustable Latch Check Speed Positioning
- Adjustable Opening Force Limitation
- Adjustable Opening and Closing Speed Limitation
- Sequential Operation (*Push to Open/ Push to Close*)
- On-Board Power Supply Output With Overload Protection (*24VDC .75A Max.*) for Radio Control Receiver – No Auxiliary Transformer Required
- On-Board Output for 24VDC Electric Strike With Adjustable (.2-3.6S) Delay
- On-Board Output for 24VDC Magnetic Lock
- On-Board Output for Door Open or Door Closed Position Status
- On-Board Input for Key Switch
- On-Board Inputs for Swing Side and Approach Side Door Mounted Presence Sensors, Swing Side Overhead Mounted Presence Sensor and Swing Side Safety Carpet
- Built-In Safety Circuit With Stall Logic – No Auxiliary Modules Required
- Global Power Supply – Selectable 115-230VAC 50-60 HZ, Single Phase

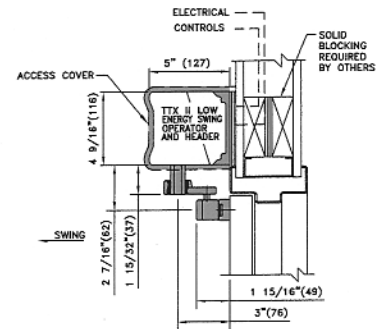


Registration of door position back to the controller shall be determined via linear potentiometer. Signals from the linear potentiometer shall define door position without of door position magnets or mechanical switches

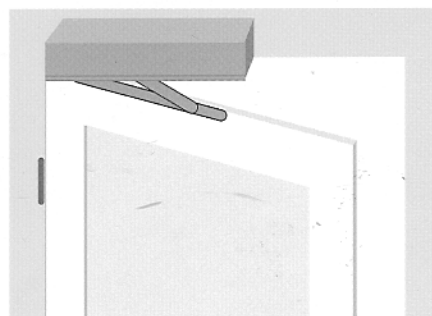
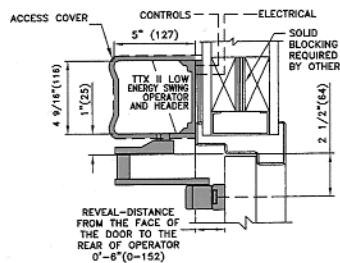


- **Standard Push Application**
Telescoping Door Arm will accommodate door reveal from 0 - 9 7/8"

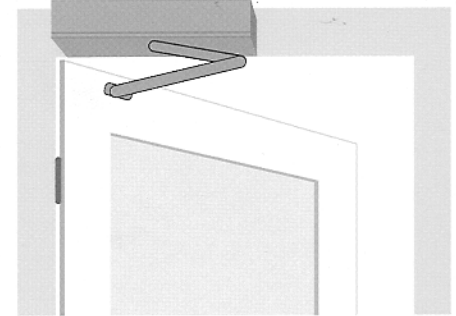
- **Standard Pull Application**
Inswing door arm and slide track assembly for butt hung or offset pivot doors, with 0" reveal



- **Standard Deep Reveal Pull Application**
Inswing door arm and slide track assembly will accommodate door reveal from 0-6"



Lintel Mounting Pull Application



Lintel Mounting Push Application

★★★★★
TORMAX
AUTOMATIC

TORMAX Technologies, Inc.
11803 Starcrest Drive
San Antonio, Texas 78247
888-685-3707
210-494-3551
Fax 210-494-5930
www.info@tormaxusa.com

TORMAX is a division and a registered trademark of Landert Motoren AG